

PRICE YOUR EICR

The Electrical People

GOLD STANDARD ELECTRICIANS

HOW MANY CONSUMER UNITS DO YOU HAVE?

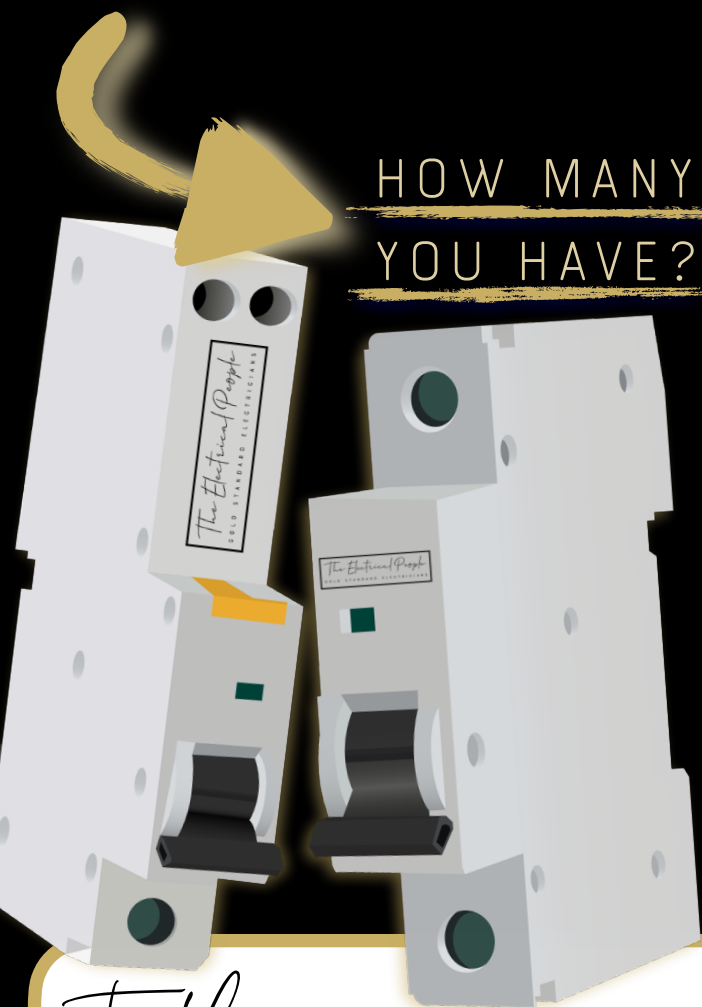
CONSUMER UNITS ARE THE ENCLOSURES WHICH HOUSE YOUR CIRCUIT BREAKERS. THESE ARE OFTEN MADE FROM METAL OR PLASTIC.



HOW MANY MCB'S/RCBO'S UNITS DO YOU HAVE?

EACH MCB OR RCBO GENERALLY REPRESENTS ONE CIRCUIT.

THERE MAY BE MORE THAN ONE CIRCUIT IN EACH MCB OR RCBO (MOST COMMON WITH MAINS POWERED FIRE ALARM CIRCUITS) BUT YOU WILL NOT BE ABLE TO SEE THIS WITH THE COVER ON.



Tally

(RECORD YOUR FINDINGS HERE)

CONSUMER UNITS

X £50.00

=

+

MCB'S/RCBO'S

X £20.00

=

Total